

GuidePRO Band Saw Feed Guide



OWNERS MANUAL:

Bow Products GuidePRO Band Saw Feed Guide is for use with Band Saws. This manual shows proper set up, use and adjustment procedures. Be sure to read instructions carefully AND watch instructional videos in GuidePRO section of our website: www.bow-products.com Be sure to read **TIPS** below. Also see GuidePRO accessories below.

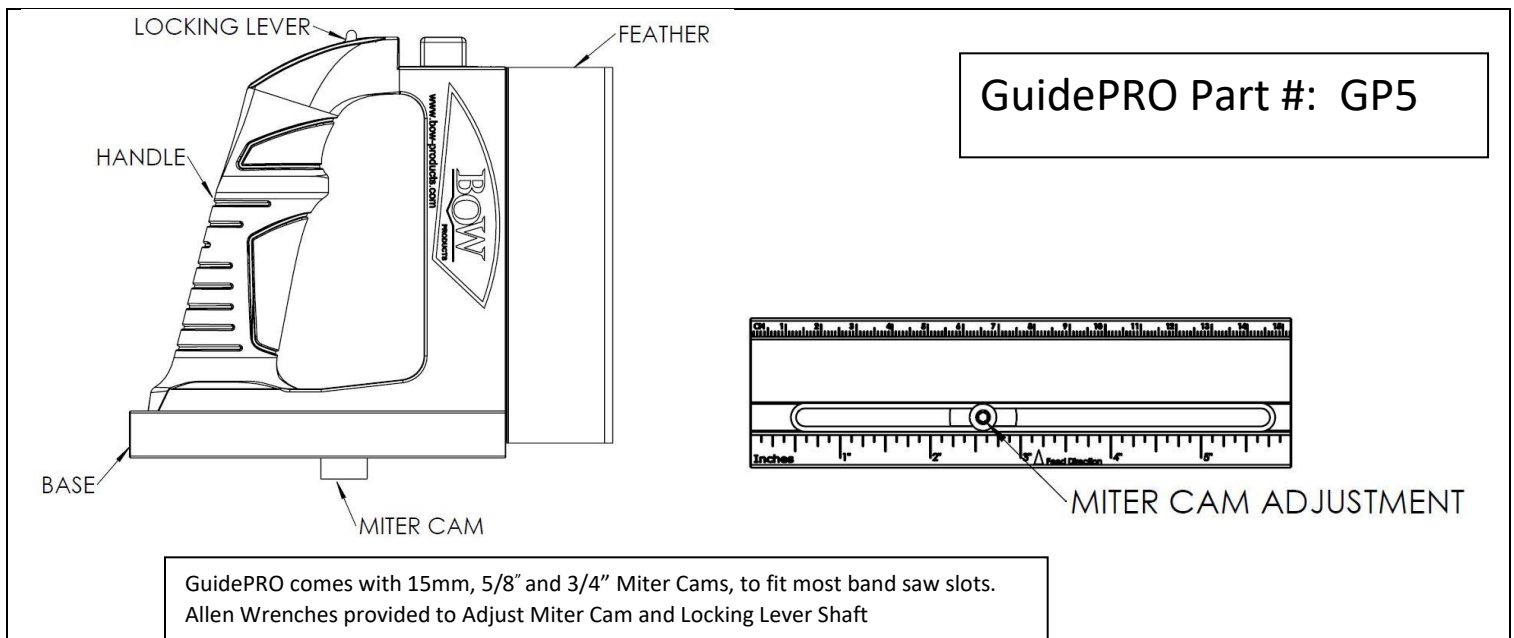
⚠ WARNING: When using Electric Power Tools with the GuidePRO, Be sure to understand and adhere to the tool manufacturer's instructions including the safety precautions contained herein to avoid possibility of fire, Electric Shock or Personal injury. Read and understand all instructions before using this product.

⚠ WARNING: When using the GuidePRO, be sure to adhere to the following general Safety guidelines. Failure to do so can result in serious injury or loss of limb or loss of life.

- Always ensure Power to the Band Saw is Shut Off until the GuidePRO and workpiece are set up, positioned clear of the cutting blade and are ready for in feed.
- Always ensure there is clearance for the workpiece to feed through the Blade.
- Once the GuidePRO is set, ALWAYS feed the workpiece with both hands on the workpiece, there is no need to hold the GuidePRO in place. ALWAYS finish the cut with Push Stick or pull the workpiece through from the opposite side of the blade. Keep your hands clear of the blade.
- If feeding multiple workpieces of similar material/dimension to make the same cut over and over, ALWAYS turn the Band Saw Power Off in between GuidePRO set up and feeds.
- When done with cut, ALWAYS turn the Band Saw off before removing the GuidePRO from the Miter Slot.

⚠ WARNING: California Prop 65: GuidePRO is for use on cutting machines in woodworking. Woodworking dust is known to the state of California to cause cancer and birth defects or other reproductive harm. For more information, go to www.P65warnings.ca.gov.

Familiarize yourself with GuidePRO:



GuidePRO SET UP

IMPORTANT > PRACTICE SET UP SEVERAL TIMES BEFORE MAKING YOUR FIRST CUT:

Practice will help you get comfortable with set up, positioning and various pressure settings.

TIP: Watch videos for Set Up, Cutting and Tuning adjustments in GuidePRO section of website: www.bow-products.com

TIP: Rub fine saw dust over the feather to make it easier to glide wood or adjust Feather Position.

- 1. Set Position of the Miter Cam on the GuidePRO Base:** Positioning the Miter Cam on the base is necessary to align the GuidePRO with your Blade. The distance between the Miter Slot and the Blade varies for each band Saw. The correct position enables you to push the GuidePRO Feather against the workpiece and apply pressure to the workpiece against the fence with the Locking Lever engaging. The Locking Lever rod must contact the base when depressed to hold the GuidePRO in place. First be sure to select the correct cam for the size miter slot on your band saw. GuidePRO comes with 15mm, 5/8" and 3/4" Miter Cams and works with Miter Slots that range from 2" - 8" (50mm – 203mm) from the blade. Using Allen Wrench provided, adjust the position of the Cam on the Base (Diagram 1 below). With the Cam loose, set the GuidePRO Base in the Miter Slot (diagram 2) to get an approximate position of the Cam on the Base. Push the GuidePRO Feather against the workpiece (Diagram 3) and check the Cam position, and then tighten with the Allen Wrench provided. The GuidePRO Handle has 5" (127mm) of slide range on the GuidePRO Base. You don't have to be exact in positioning the Miter Cam into the Miter Slot. To understand the Locking Lever connection to the base as it relates to Miter Cam positioning on the base, see Locking Lever Adjustment below.

VIDEO: SETTING THE CAM IN PROPER POSITION FOR YOUR BAND SAW

QR CODE

URL LINK

VIDEO: POSITIONING THE GUIDEPRO AND WORKPIECE FOR THE CUT.

QR CODE

URL LINK

- 2. GuidePRO Positioning on the Workpiece:** There are a couple of methods to position the GuidePRO on the Workpiece. In each case, begin with the GuidePRO Miter Cam in the miter slot perpendicular to the fence (diagram 2) and then rotate clockwise until the Cam catches in the miter slot where it ends up in the proper feed angle (diagram 4). **The first method** is to set the position of the feather for desired pressure, press down the Locking Lever and position it ahead of the blade (desired pressure is achieved by how far the feather extends past the front of the workpiece > toward the fence). Next slide the workpiece into the GuidePRO feather along the fence. The GuidePRO feather should end up a minimum of 1/4" from the blade under tension from the workpiece. **The Second method** involves applying pressure to the workpiece as you simultaneously slide the workpiece into position just short of the blade. With the Locking Lever open (Diagram 3), Position the GuidePRO feather on the front end of the workpiece about a 1/4" (6.5mm) back from the front edge of the workpiece and the workpiece approximately 1" forward of the blade. With one hand pushing the workpiece and the other hand on the GuidePRO Handle (with your thumb up over the Locking Lever), simultaneously apply pressure as you move the workpiece forward toward the blade. The Feather flexes according to the amount of pressure you apply. When set, press down the Locking Lever to secure the GuidePRO in place (Diagram 5). Be sure the Workpiece is NOT touching the blade prior to starting your cut. Once the GuidePRO is set up and locked into position, there is no need to hold the GuidePRO with your hand. Start the Band Saw and feed the material with both hands safely behind the GuidePRO.

Important Positioning and Cutting Considerations:

- The distance that the workpiece is from the blade once you are set up is a matter of preference and safety consideration. Consult your Band Saws owner's manual. Many woodworkers keep the distance close to the blade (Approx. 1/4" (6.5mm)) to minimize chatter and get a cleaner cut all the way through the board.
- **⚠ WARNING: DO NOT** have the GuidePRO or the workpiece in contact with the blade as you power up the Band Saw. Doing so can result in damage to your GuidePRO, your Band Saw and possibly severe injury to you.
- Always finish the cut with a push stick. Once the material passes through the GuidePRO, the GuidePRO is no longer secure in the miter track as it is no longer under pressure against the workpiece. Note the Locking Lever is still pressed down securing the GuidePRO to the Base. **TIP:** If you want to make repetitive cuts to similar workpieces, just leave the Locking Lever closed and reposition the next workpiece with the GuidePRO and feed.

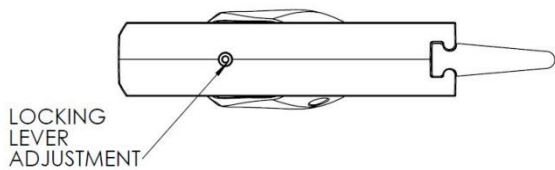
GuidePRO Base has a Dual Purpose:

The GuidePRO Base is detachable with the Locking Lever open and has measurement guides in metric and imperial that help you measure the distance from the fence to the blade. Also use the base as a right-angle square to help you Square the fence to the table.

GuidePRO Tool Adjustments:

GuidePRO Feather Positioning: The GuidePRO Feather should be close to or flush to the Band Saw tabletop. This ensures pressure of the Feather is applied along the workpiece from the bottom up. Simply slide the feather up/down.

GuidePRO Locking Lever Adjustment:



Allen Wrench provided.

Turn the Lever Shaft counterclockwise to extend the shaft, clockwise to retract. Adjust only a quarter turn at a time.

As you press forward on the GuidePRO Locking Lever during set up, this secures the GuidePRO to the Base and locks in the pressure against the workpiece (refer to set up instruction above). The Locking Lever is attached to the Lever Shaft that extends down through the GuidePRO Handle assembly and extends out of the bottom of the GuidePRO. The distance that the Lever Shaft extends out of Base comes from the factory preset at 1/16" (1.6mm) and should not require adjustment.

To understand this important setting and when to make an adjustment, if the Lever Shaft sticks out too far, then the Locking Lever will be hard to close or not close all the way and thus you can't secure the GuidePRO handle to the Base. To fix, turn the Lever Shaft clockwise a quarter turn at a time until Locking Lever fully closes and secures the GuidePRO to the Base. Conversely, if the Lever Shaft were recessed too far into the GuidePRO, while the Locking Lever will close all the way, the Lever Shaft will not protrude enough to secure the GuidePRO to the Base, meaning the GuidePRO would slide on the Base and you could not hold Feather pressure against the workpiece. To fix, turn the Lever Shaft counterclockwise a quarter turn at a time until Locking Lever closes and secures the Handle to the Base. **CRITICAL SETTING:** The Adjustments to the Lever Shaft are very minimal. DO NOT unscrew (Counterclockwise) the Lever Shaft all the way out as you risk disconnecting the Lever Shaft from the Locking Lever.

WARRANTY: GuidePRO comes with a One Year Limited warranty for Defects in Materials or Workmanship.

CUSTOMER SERVICE: You may contact us via email customerservice@bow-products.com or by calling 844.895.4488.

GuidePRO ACCESSORIES:

- **GuidePRO EXTENSION KIT (Part # GP7):** Adds 4" extension (includes a 10" Feather). Ideal for taller panel feeds.
- **GuidePRO ANCHOR BAR (Part # GP9):** Replaces miter cam with locking miter bar. If you want to lock down the GuidePRO in a fixed position. Ideal for repetitive feeds. Anchor Bar enables use GuidePRO on a Table Saw or Router.

Other Bow Products: FeatherDUO Featherboard; FeatherPRO, PushPRO Push Stick and Hardware Kits. See Website

REPLACEMENT PARTS: If needed, please call us at 844.895.4488, or use the contact form on our website.

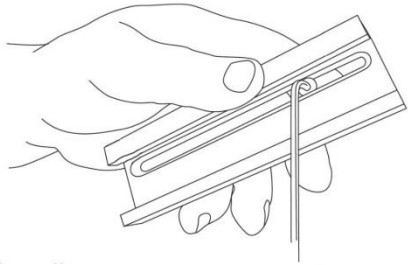


Diagram 1: Adjust position of Miter Cam in GuidePRO Base

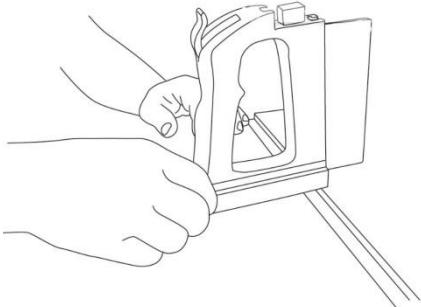


Diagram 2: Set GuidePRO Miter Cam in miter slot

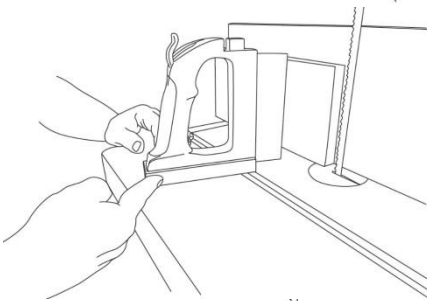


Diagram 3: Rotate GuidePRO clockwise until Miter Cam stops in the miter slot.

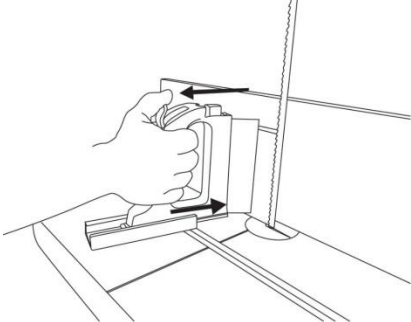


Diagram 4: With Locking Lever open, push GuidePRO Feather against workpiece with desired pressure while advancing workpiece toward the blade stopping approximately $\frac{1}{4}$ " short of blade. You want the Feather approximately a $\frac{1}{4}$ " (6.5mm) back from the front edge of the workpiece.

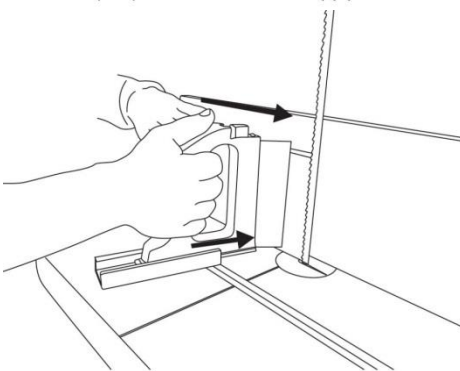


Diagram 5: Press down Locking Lever to hold pressure and position.



Bow-Products
8778 Boyce Rd.
Corfu, NY 14036
844.895.4488
www.bow-products.com

GuidePRO Part #: GP5